



CHESTNUT

P R O D U C T S

FINISHING SCHOOL

Using Burnishing Cream on Sanding Sealer.

1

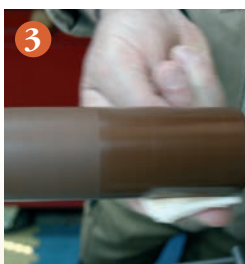


1 Burnishing Cream is a creamy liquid which contains a very mild abrasive; so mild that it will cut back a finish and leave a shine. Always shake the bottle well to mix the abrasive into the liquid.



2

2 Prepare your work as normal and apply sanding sealer. Cellulose Sanding Sealer is best for this (Acrylic Sanding Sealer and Shellac Sanding Sealer can be used provided sufficient time has been left for the sealer to harden). Cellulose Sanding Sealer is ready for burnishing within minutes.



3

3 Use Burnishing Cream sparingly, don't over lubricate the surface. Use Safety Cloth to apply it with the lathe running, using a firm (not hard) pressure to maintain contact between the timber and the cloth.



4

4 Continue the process, adding more Burnishing Cream to the cloth if necessary (still sparingly). Carry on until you see the shine grow. If too much Burnishing Cream is applied use a dry cloth to bring up a higher sheen.



5

5 The piece should now feel silky smooth to the touch.

For best results and protection overcoat with any of the waxes in our range or Friction Polish.

See our YouTube channel for more tips!

More information available from your local stockists or contact us at:

PO Box 260, Stowmarket, IP14 9BX

Tel: 01473 890118

mailroom@chestnutproducts.co.uk

www.chestnutproducts.co.uk

