



CHESTNUT

P R O D U C T S

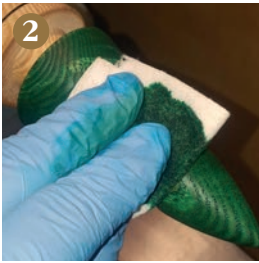
FINISHING SCHOOL

Decorating a Christmas Tree

WITH ANDY MATTHEWS



1 Turn a Christmas Tree shape using an open grained wood such as Ash or Oak. To get the best effect from this method use a Liming Brush to open (deepen) the grain even more.



2 Stain the tree part with Green Spirit Stain using a cloth or brush, taking care to only stain the parts you want to be green. If you want to colour the 'pot' or the trunk this should be done now. Once dried, spray on a coat of sanding sealer to seal the pores of the wood, which will give a more dramatic effect later.



3 Using a cloth, apply Gilt Cream to the whole of the green area. Apply quite liberally, ensuring that it is totally covered (we've used Gold here but Silver or Copper are also very effective).



4 Wait just a couple of minutes, then using a cloth dampened with oil (Lemon Oil is great for this but most will do) wipe off the surplus Gilt Cream so that it only remains in the open grained areas.



5 Polish using WoodWax 22 or Microcrystalline Wax to seal and protect the Gilt Cream and to make the greenery shine. Now, where's the star for the top?

See our YouTube channel for more tips!

More information available from your local stockists or contact us at:

PO Box 260, Stowmarket, IP14 9BX

Tel: 01473 890118

mailroom@chestnutproducts.co.uk

www.chestnutproducts.co.uk

