



CHESTNUT

P R O D U C T S

FINISHING SCHOOL

Using Liming Wax.

1



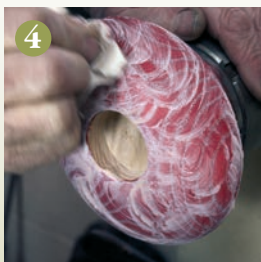
1 Liming Wax is a soft paste wax blended with titanium dioxide to make it a brilliant white. It is used to give a limed look to open grained woods, especially ash and oak.



2 Be sure to remove any scratches in the timber before starting. Liming Wax looks great over a stain, Ebonising Lacquer or on bare wood. If using a stain be sure to leave enough time for it to dry. Use a Liming Brush to open the grain for a more dramatic effect.



3 Apply Liming Wax over all of the surface liberally using a soft cloth, being sure that the wax covers all of the grain.



4 Wait a few minutes then remove the surplus Liming Wax with a clean cloth. The wax will stay in the open grained areas.



5 Wait fifteen minutes then polish using WoodWax 22 Clear to protect the Liming Wax from discolouring with handling. It is not advisable to apply a lacquer over a lime waxed surface. Alternatively apply our Microcrystalline Wax to give a more hard wearing finish to your piece.

See our YouTube channel for more tips!

More information available from your local stockists or contact us at:

PO Box 260, Stowmarket, IP14 9BX

Tel: 01473 890118

mailroom@chestnutproducts.co.uk

www.chestnutproducts.co.uk

